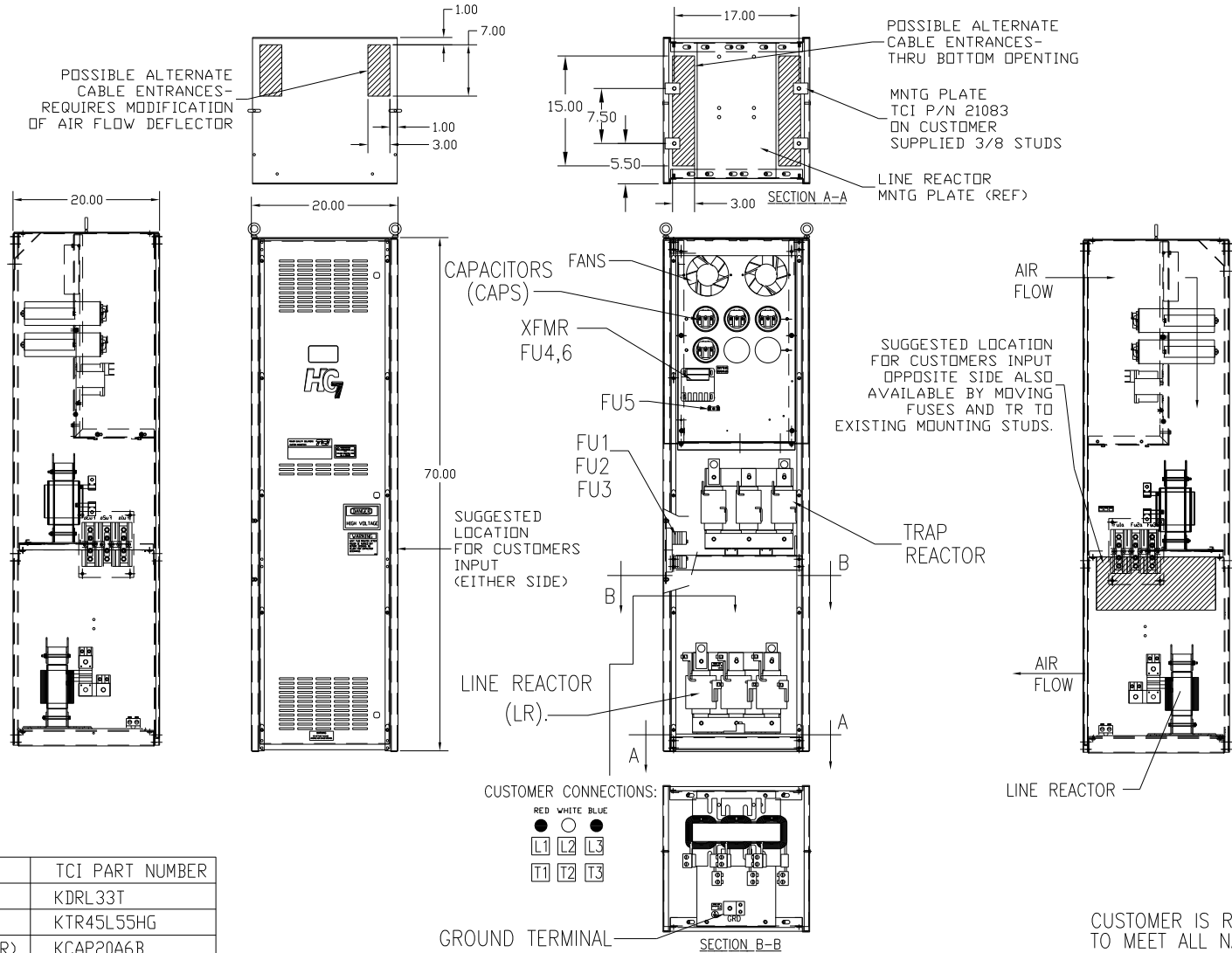


UNIT SPECIFICATIONS:					
KW	HARMONIC	VOLT	HZ	PHASE	FLA
110	5TH	400	50	3	210
ENCLOSURE		NEMA 1			
APPROX.WT. LBS.		425			



RED WHITE BLUE
 ● ○ ●
 L1 L2 L3
 T1 T2 T3
CUSTOMER CONNECTIONS:
 WIRE RANGE-TWO 350MCM-4
 TIGHTENING TORQUE 275 IN-LB.
 GROUND LUG:
 WIRE RANGE-TWO 350MCM-4
 TIGHTENING TORQUE 275 IN-LB.

SYMBOL	TCI PART NUMBER
LR	KDRL33T
TR	KTR45L55HG
CAP1,2,3,4 (20 KVAR)	KCAP20A6B
XFMR.	24393
Fu1, 2, 3	13334
Fu4,6	24073
Fu5	24012

SEE DRAWING# 27709-1 FOR SCHEMATIC

CUSTOMER IS RESPONSIBLE FOR INSTALLATION TO MEET ALL NATIONAL AND LOCAL ELECTRICAL CODES.

				TOLERANCES (EXCEPT AS NOTED)		7878 N. 86th STREET MILWAUKEE, WI 53224	
				DECIMAL		HG110LW01ST, 110KW 400/3/50, ENCLOSED.	
				XX ± .03		DRN. BY DSW DATE 11/17/2010 DWG. NO. 104515DG	
				XXX ± .01		SCALE TO FIT	
				FRACTIONAL ± 1/32		APRVD C	
A AS BUILT		11/04/10		DSW		SHT. 1 OF 1	
NO REVISION		DATE		BY			
				ANGULAR ± 1/2°			